

# Cotton Patch Dispatch

Cotton Patch Quilters  
P.O. Box 49511, Athens, GA 30604  
Website: <http://www.cpquilters.org>  
email: [info@cpquilters.org](mailto:info@cpquilters.org)



July 2011

**Our Membership Year: REMINDER.**  
Don't let your membership expire. If you are dropped from the roll, you'll be missing all the benefits of membership. \$20 is only 66¢/mo., \$.39¢/wk., \$.06¢/day

**Refreshments brought to you by:**  
Caryn Curry, Cleo Ward, Anita Heady

**July meeting:**  
"How to Make an American Quilt"  
It will be a small group, interactive "design a quilt" activity and each member of the winning group will receive a July themed prize!

## Message from the President

### Encore!

*Encore: "noun. A demand by an audience for an additional performance."*

And so we begin an encore year of this presidency – however, I don't consider what I'll be doing over the next year a "performance." Rather, this will be a call to serve – a responsibility that I and the other officers and chairs enthusiastically accept. Please allow me to speak on behalf of your Board when I say we promise to work hard for the 100+members who love the art of quilting and are members of the Cotton Patch Quilters.

But you, as a member, have a responsibility as well. I hope you will serve when asked or volunteer when you see or hear of an opportunity to make our guild the best it has ever been. I also ask you to join me during the year as we discover new techniques in our art, create new pieces to add to our quilted collections, and make new friends who will join our guild. It's going to be a great 12 months and I'm honored to be working for you and with you.

### Encore! Encore!

P.S. Dues are due.

*Ruhanna Neal*

#### **Guild Officers (2011-2011)**

President: Ruhanna Neal  
President elect: Phyllis Rother  
Secretary: Nancy Bruce  
Treasurer: Chris Langone  
1<sup>st</sup> VP for Member Education: Deb Henderson  
2<sup>nd</sup> VP for Membership: Denise Stanckek

#### **Sub-committee chairs**

Challenges – Mary Beth Tawfik  
Door Prizes – Sue Trinrud  
Show & Tell – Linda Murray

#### **Chairs**

Bee Keeper: Jodi Seila  
Community Service: Ellen Nelson  
Internet: Frances Arnold  
Library: Suzanne Reeves  
Publicity: Kyle Howington  
Social chair: Cleo Ward

#### **Opportunities to volunteer your service**

Quilt Show chairs: [Your name here](#)  
Fundraising chair: [Your name here](#)

## NON-GUILD EVENTS

### Ebony Stitches Quilt Exhibition

Porter Sanford Art Center  
3080 Rainbow Drive, Decatur, GA  
Ebony Stitches Quilt Guild Presents.....  
"Fabrics of the World"

A Quilt Exhibition showcasing the unique design & utilization of fabrics and different forms of fiber.

Opening Night Reception –

Thursday July 21, 2011 @ 7:00pm

Exhibition Dates –

Thursday July 21 thru Sunday July 24, 2011

Artists and Quilters who are interested in participating in the Exhibition, please contact

[ebonystitchers1@bellsouth.net](mailto:ebonystitchers1@bellsouth.net)

### Quilts of Valor Symposium

Quilts of Valor Symposium

When: Fri Aug 12 – Sun Aug 14,

Where: Charlie Elliott Conference Ctr  
Mansfield, GA

### Georgia Bonesteel at East Cobb Quilt Guild

Description: Lecture from visiting speaker Georgia Bonesteel entitled "Live & Learn: A Quilter's Mantra"

For more information, See: <http://www.ecqg.com/>

When: Fri Aug 26 9:30am – 12pm

Where: Catholic Church of St. Ann,  
4905 Roswell Road, Marietta, GA

Map Quest really needs to start their directions on # 5. I'm pretty sure I know how to get out of my neighborhood

### SAVE THE DATE!

Lyndon House and ACCA is proud to return to the original partnership in sponsoring the

39<sup>th</sup> Annual Harvest Festival

Thursday, October 13, 2011

Enjoy all the grand historian events

Only THREE months away!

**There is great need for a sarcasm font.**

### Quilting on the River

Pieceful Hearts Quilters presents Quilting on the River, a judged show with 300 quilts on display, vendors, demonstrations, and quilt appraisals.

<http://phquiltshow.blogspot.com>

When: Fri Oct 14 10am – 7pm

Where: Augusta Activities Center,

100 Riverview Park Dr,

North Augusta, SC 29841

(the first exit over the Georgia border!)

## Celebrating another Trip Around the Sun!

### JULY

Nelson, Ellen		7/9
Paul, Sherry		7/10
Griffin, Lois		7/13
Monk, Bobbie		7/16
Bruce, Nancy		7/18
Downs, Holley		7/20
Shepard, Hilda		7/27
Bauer, Vicki		7/29
Cox, Mary Ann		7/31

*How many times is it appropriate to say "What?" before you just nod and smile because you still didn't hear or understand a word they said?*



NOTE from Judy Cole:

We made it to Alaska yesterday without any major problems with the RV. The photo was made at the border. Found a nice quilt store in Whitehorse, Yukon Territory, Canada. Hope all is well in Athens and keeping up the stitching.

Catherine Hart is making quilts for low vision babies and has found that the babies respond very well to material that reads as yellow, red, black, and white; also, large dots (any color).

She can use unwanted, outdated, even stained party and/or wedding clothes, any color. In particular, but not limited to, satin, taffeta, and other "fancy" cloth which add to the variety of textures in the quilts and corduroy, velveteen/velvet clothes or pieces of cloth any color. Any type cloth for the backing would also be appreciated. If you have items to donate to her but can't get out to see her, give her a call at 706-255-6001 to make arrangements.

## Beekeeper's Note - Jodie Seila

If you are interested in starting a bee, please contact Jodie so she can put it in this **HOT** newsletter.

### Charity Bee

Every Wednesday  
9:30 AM to noonish  
Lyndon House Fiber Rm  
Everyone is welcome to come and stay as long as you like. We have fun. Contact the queen bee Ginny Lynch at [lynch@uga.edu](mailto:lynch@uga.edu)

### Handwork Bee

4<sup>th</sup> Thursday of each mo.  
10 AM to 2 PM  
(bring your lunch)  
Mary Colley's home  
155 Fox Trace  
Athens 30606  
(706 613 1161)

### Night Owl Bee

1st Monday  
6:30 PM to 9:00 PM  
For information about the bee contact Denise Stanckek [denisest@uga.edu](mailto:denisest@uga.edu)

### Morning Madness Bee

Members' Homes  
2nd Monday of the month  
9 AM to 3PM  
(bring your lunch).

If you are interested in this bee, please contact Shirley Erickson (706 549 7454) to know whose home the bee is meeting at each month.

## Treasurer's Report *Chris Langone*

### Operating Account

Beginning Balance as of 4.3.11 **\$4106.38**

#### Credits:

Social (door prizes) \$19.00

**TOTAL CREDITS \$19.00**

#### Debits:

Newsletter \$12.47

Programs 402.00

Community Service 121.66

**TOTAL DEBITS \$536.13**

**Ending Balance as of 5.31.11 \$3589.25**

### Money Market Account

Balance as of 4.30.11 **\$9377.91**



## OCAF EVENTS & EXHIBITS

### PAPER MOON:

#### Artwork by Claire Clements

**thru July 15, 2011**

Clements' paintings are in numerous collections including the permanent collections of the Georgia Museum of Art, the National Sea Grant Collection, DeKalb College Art Collection, the King & Spalding Attorneys Collection, St. Mary's Hospital Collection, and the Pennsylvania State University Collection.

### 9<sup>th</sup> Annual Perspectives:

#### Georgia Pottery Invitational

**Aug. 27- Sept.14, 2011**

The Opening Gala Reception and Preview Sale is a pottery collector's paradise with an extensive selection of hand-made functional pottery with over 5,000 pots to choose from. Each of the 50 Georgia potters will have on display and sale an average of 100 pots in the Rocket Hall Sales Gallery.

Two significant pottery exhibitions in the OCAF Art Center building will also be open. The Main Gallery will have on display an exhibit of 150 pots; two pots by each of the fifty potters and one pot from each of their private collections. In the Members Gallery there will be a display of pottery by Jose Luis Yamunaque and Kate Tremel.

### **Upcoming Art Classes & Workshops**

#### **Clay Open Studio**

**Open studio fee:** \$50 per month, or \$5 per day pay as you go.

**Clay cost:** \$30/25 lb. bag, includes bisque firing, glazing and firing.

**Days & hours:** change from week to week, please email [info@ocaf.com](mailto:info@ocaf.com) to be placed on the list serv.

Open studio time is available for adults who have previously taken OCAF ceramics classes or have previous experience working in another ceramics studio. Clay used in the studio must be purchased from OCAF. Open Studio time determined by monthly need.

## COMMUNITY SERVICE

The Charity Bee began the first of July with Ellen Nelson in the helm. Ginny was forced to release the "whip" because of Guild rules. Eleven ladies showed up on June 29: Jan Leonard, Ginny Lynch, Phyllis Rother, Jane Choquette, Frances Lang (and two grands), Julie Allen, Vicki Bauer, Pam Pontenberg, Sunny Madurski (and Torry), Ellen Nelson, and Lola Gazda.

Jan won the \$35 gift certificate to Dragonfly at the June Guild meeting. How appropriate that Jan won, since she has been tireless in her quilt-making at home and at the Charity Bee. She and Vicki are the "champs" for taking stacks of orphan fabric and combining it with fabric from their own stash and returning with not one or two, but more like 4 or 5 finished quilt tops.

Ellen returned after a 4 week hiatus (Kansas City, New Orleans, Charleston, and Toccoa) with an armload of quilts that she had quilted. Those were trimmed and binding was made for them.

Sunny had a pillowcase dress that the Bee'ers thought might be a good addition to articles that we take to Sandy Creek when we demonstrate quilting during their Harvest Festival. The conversation turned to Sweatshirt jackets, and Ellen and Phyllis agreed to bring to the July 6 meeting some finished samples for those that attend. Ellen has sweatshirts in various sizes that we will be using at that meeting to perfect our skills at making jackets. We will also be working on pillowcase dresses by adapting two patterns that Ellen has and will bring.

We DO NOT meet at the Lyndon House on July 13 or July 20 because summer camp will be using the Fiber Room. We will be working on jackets, pillowcase dresses and, of course, quilts July 6 and 27--maybe even into August. If you have thought that you'd like to do either, come and join us from 9:30 until noon. We have fun!

Dear Guild Members,

It's already a HOT SUMMER, and we aren't even there yet! The children housed at the Safe House sponsored by Project Safe are just like all kids. They want to play and cool off in the nearest lake, pool, or sprinkler. My husband and I always managed to provide a plastic pool for our kids during the summer so when Katy from Project Save contacted me about the Shelter children needing a pool, my heart went out to them. They deserve this "luxury" as much as any child, but their safety and security are paramount until they and their mothers are relocated to their new beginnings. They are kept hidden from the public eye at the shelter and must play there.

Please read the note below from Katy and let her know if you can help. Together we can make a difference in the life of a child just by making a small donation. If we all pitched in a few dollars (the price of lunch), we could make this summer much more comfortable and fun for the Project Safe children.

Thanks for anything you can do to help. Katy's note follows:

*"I was wondering if any of your Quilters or friends would be interested in donating a kiddie pool or two for the shelter? We've currently got 5 kids that love to swim/play in the water, and would love to be able to splash around during Kids' Groups this summer. The kids range from 12 months to an 11 year old boy who's about the size of a 15 year old. I think our issue with size is that it is small enough to easily dump and put away at the end of the night, but still large enough for at least a couple of kids to be in at the same time. I also asked Shalene, the children's advocate which she would prefer as far as plastic to inflatable, and she conveyed that one of each would be ideal, but hard plastic if we were only able to get one. Please let me know if you have any other questions. I hope your group can help us out!"*

Contact information:  
Katy Hendricks, BSW  
Shelter Operations Coordinator  
PT Assistant to the Executive Director  
Project Safe, Inc  
706.549.0922 ext 25



## Minutes

Garyn Curry



The June meeting of the Cotton Patch Quilt Guild was held Tuesday, June 14, 2011 at the Lyndon House Arts Center.

The meeting began at 6:30 pm since it was the semi-annual potluck meeting. Lots of good food was served! Cleo had asked that guild members wear hats, and that a winner from each table would be selected. The security guard for the Lyndon House served as judge, and the following members were selected as winners: Frances Lang, Terri Jarrett, Sylvia Schaefer, Judy Caputi, and Phyllis Rother.

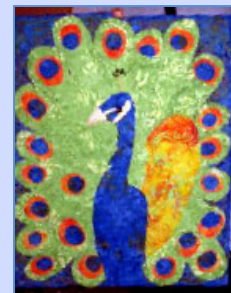
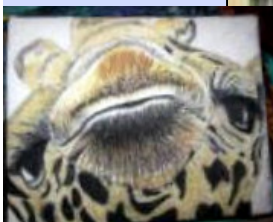
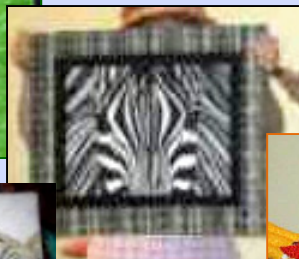
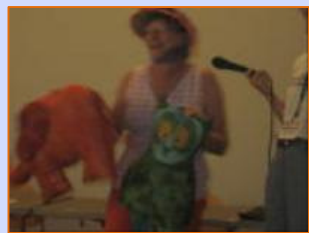
Ginny Lynch from Community Service drew for the \$35 gift certificate to Dragonfly. Congratulations go to Jan Leonard!

Marty Tanner-Hughes called for the people that entered the zoo challenge to show off their projects. Members that brought or sent challenges were: Marty Tanner-Hughes, Mary Ann Cox, Sylvia Schaefer, Catherine Hart, Terri Bear, Suzanne Reeves, Mary Beth Tawfik, Pat Schroeder (2 quilts), France Arnold, Deb Henderson, Terri Jarrett, Shirley Erickson, Madeline Hawley, Linda Zacker, Fay Rawls, Denise Stanchek, and Nancy York.

Treasurer Chris Langone presented the Lyndon House with a check for \$1000 from the guild. Sarah and Nancy were on hand to represent the Lyndon House and accept the gift.

Mary Grider presented the members that brought Show and Tell. Those members were: Barbie Bugg, Denise Stanchek, Nancy York, Linda Murray, Mary Ellen Taylor, Catherine Hart, and Anita Heady.

Shary Karlin performed the induction ceremony for the incoming officers. Members inducted were: Ruhanna Neal – President; Phyllis Rother – President Elect; Deb Henderson – 1<sup>st</sup> Vice President for Member Education; Denise Stanchek – 2<sup>nd</sup> Vice President for Membership; Nancy Bruce – Secretary, and Chris Langone – Treasurer. After the induction, Phyllis made some closing remarks, and the meeting was adjourned.



Photos by  
Kyle Howington