

Binding a Charity Quilt

(1) To bind a quilt for Chairty, we decided to standardize our binding strips since many of us were accustomed to using different widths of binding. We settled on 2 1/2 inches in width, and we do not cut the strips on the bias.

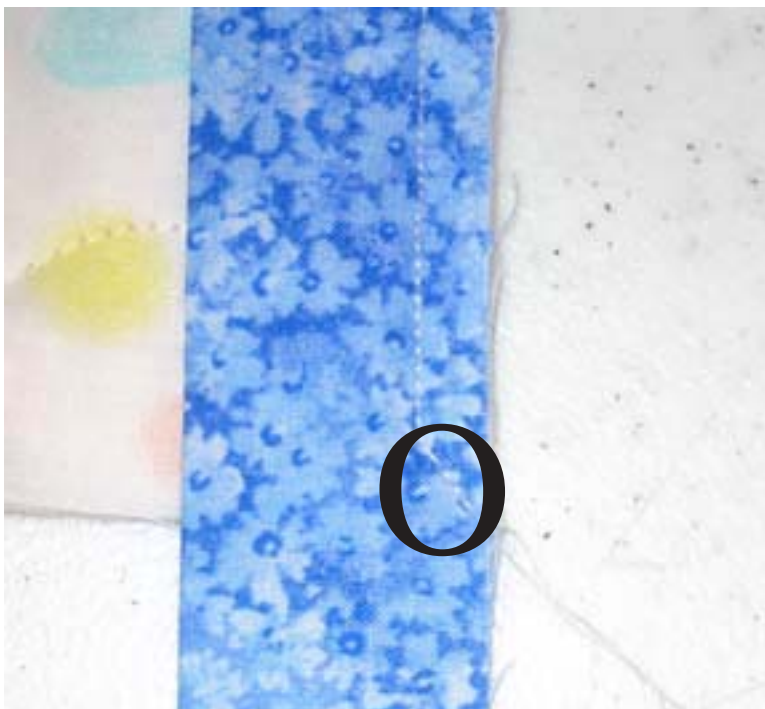
After estimating the number of strips needed to go around a quilt, we cut the number needed and sew the strips together by putting the ends of the strips at right angles to each other and sewing across so that the finished seam is at an angle.

The binding material is then ironed so that the raw edges are together.



(2) Lay the binding strip on the BACK of the quilt beginning at about half way down one side. The raw edges of the binding will be along the raw edges of the quilt.

Sew the binding down with about a 1/4 inch seam, leaving a “tail” that is about 8 inches long. Sew about four or five inches and stop. Turn the binding where it is stitched to wrap to the front of the quilt. If the folded edge of the binding covers the row of stitching you just made, you can continue to attach the binding at that sewing width. If the folded edge does not cover your stitching, adjust your seam allowance so that it does.



(3) Continue sewing until your needle is 1/4 inch from the bottom edge of the quilt. Stop with your needle down; turn the quilt and sew at an angle to the corner of the quilt. Sew off the corner and clip the threads. (The angled stitches are inside the “O.”)



(4) To make a mitered corner, fold the long “tail” of the binding up using the stitched corner angle as a guide.



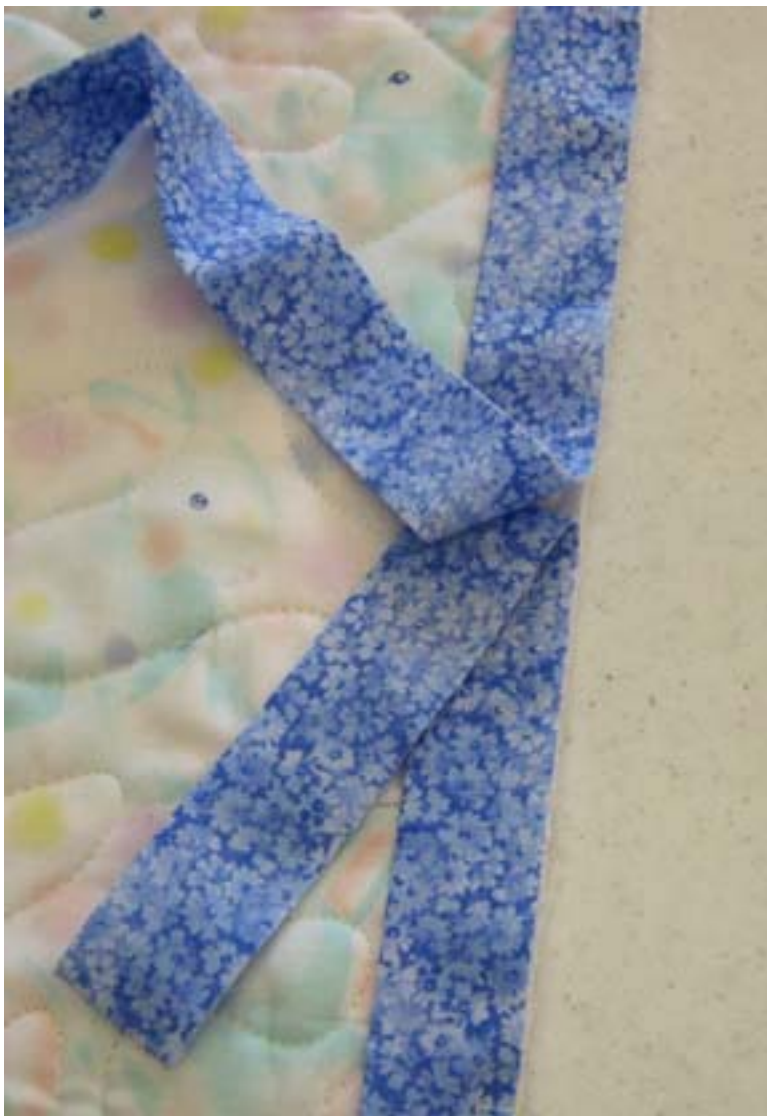
(5) Next fold the long “tail” of the binding back down making sure that the fold at the top edge of the quilt does not extend beyond the top edge of the quilt.



(6) Stitch along the second edge of the quilt with a 1/4 inch seam allowance.



(7) Continue around the quilt finishing all four corners as described. When you get close to the place where you began stitching the binding, stop stitching leaving an “opening” that is about twelve inches wide. (Practice will tell you better just how much of an opening to leave.) This needs to be large enough to turn the quilt and binding ends so you can overlap the binding strips to sew them together so there will be a joining seam at just the right spot.



(8) Fold the strips together so that they meet half way across the opening that you have left.



(8) Clip (less than 1/4 inch) the spot (through all four layers) where the binding pieces meet.



(9) Now this is the tricky part. Lay the binding strip that is on your right or at the top of the quilt (depends on how you are looking at the quilt; the picture at the left shows the “top” binding strip to the right in the photo) so that you see the right (front) side of the fabric. Open the bottom strip so that the wrong side of the fabric is showing.



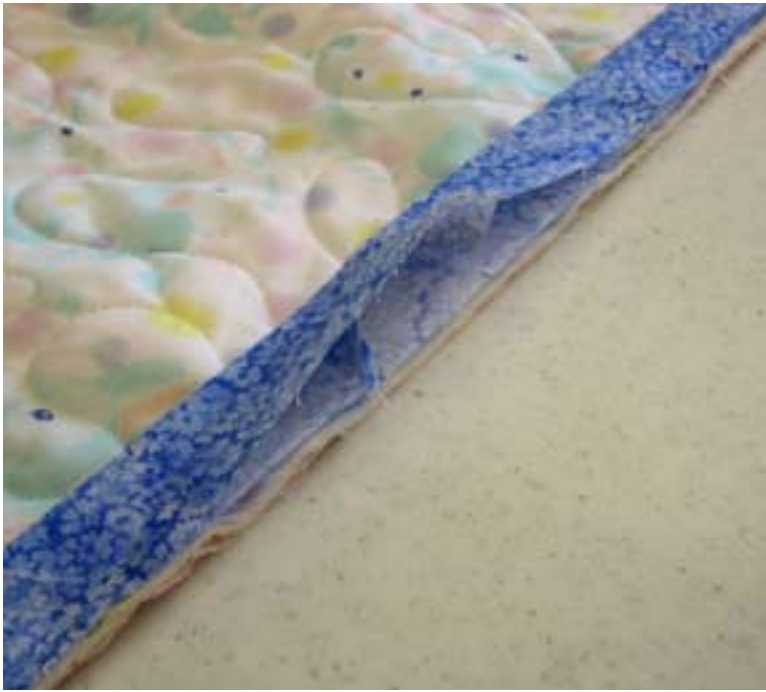
(10) Now, pick up the strip that shows the wrong side of the fabric and lay it at a right angle across the other strip matching the “clip” on the top side of the wrong side strip to the “clip on the right edge of the bottom strip. The spot in the photo is identified with an O.

(11) Line up the clip on the left edge of the bottom strip with the upper edge (no clip here) of the top strip. The spot in the photo is identified with an O1.

(12) Line up the lower clip of the bottom edge of the top strip with the right edge of the bottom strip (no clip here). The spot in the photo is identified with an O2.



(13) Now, either pin the pieces together so they won't move or hold them together firmly. Place the two pieces on the sewing machine and begin sewing at “Point O” diagonally to the unmarked corner.



(13) Trim a 1/4 inch seam allowance parallel to your line of stitching. Then straighten out the joined binding along the raw edge of the quilt matching the raw edges of the binding to the raw edge of the quilt. Then stitch the “opening” shut by stitching the binding down with a 1/4 inch seam allowance.



(14) Turn the quilt over and begin stitching along the edge of the binding fold making sure that the edge of the binding covers the row of stitches you made earlier when you applied the binding.



(15) Continue to stitch until you approach the first corner. Fold up the edges of the binding, tucking the “corner” of the quilt down into the mitered corner that you made.



(16) Fold the binding over ready to sew by pulling it straight down (the corner will be angled).



(17) Fold up the bottom edge of the binding making a miter in the corner .



(18) Hold the loose edges firmly until you sew down into the corner catching the top edge of the folded up bottom binding. Needle down, and turn to continue sewing along the bottom edge of the binding. Continue around the binding, mitering all four corners, and **YOU'RE DONE!!**

